



Beaverton Police Department

4755 S.W. Griffith Drive
Beaverton, Oregon 97005

Chief Ronda Groshong



NEWS RELEASE

Officer Jeremy Shaw
Public Information Officer
(503) 969-6502

Released: July 19, 2019
Case No: 19-1870602

Help Needed in Identifying Suspicious Male Attempting to Lure a Girl

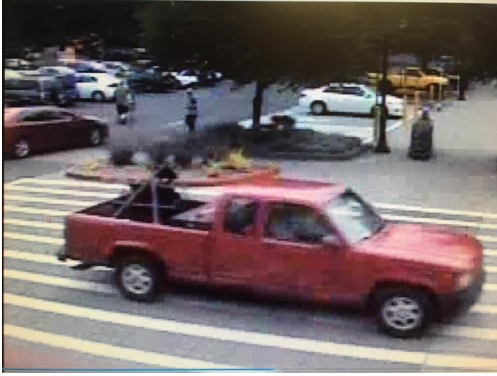
Beaverton Police Department is asking for the public's assistance in identifying a suspicious male.

On July 6, 2019 at 2:41p.m., a male tried to get an 11-year-old girl to come over to his vehicle twice in the parking lot of Walmart, located at 9055 SW Murray Blvd. The young girl told the male "no" and was able to seek out help from an adult leaving the store.

Beaverton detectives would like to identify the suspicious male and the adult who helped the young girl. The male was described as an older Caucasian male (60's or 70's) with wrinkles on his face, scruffy facial hair and a tattoo on his upper left arm. The male was wearing a black baseball cap. The male was driving a red truck similar to a mid-90's Dodge Dakota club cab with Oregon license plates. The open truck bed had items in the back that looked like shelving. The truck also had a dent on the driver's door as well as spots of rust on the driver's side.

A composite drawing of the suspicious male was created and photographs of his vehicle were obtained. If anyone can help identify the suspicious male or the witness who helped the young girl, please call Detective Maggie Brown at 503-526-2538 or non-emergency dispatch at 503-629-0111.





##BPD##
Like Us On
facebook 